

# Fully Automated Rubber Roll Grinding Machines

**RG 300** series





## Fully Automated Rubber Roll Grinding Machines

*“Total Solutions”, with ‘user centred design’ concept maximising operational and commercial value. The future of rubber roll grinding is here; NOW.*

The RG 300 series of fully automated rubber roll machines provides a complete range of PLC controlled machines for the grinding of small to medium rubber rolls required for a wide range of applications.

The ‘user centred design’ concept has been developed around a simplified user friendly PLC interface to enable easy set up for fully automatic machining of rolls.

A range of optional extras complete the package to maximize productivity and production management.

Set up is quick and easy for simple to complex roll profiles and grooving patterns, eliminating the need for highly skilled machinists.

RG 300 series

# RG 300 series

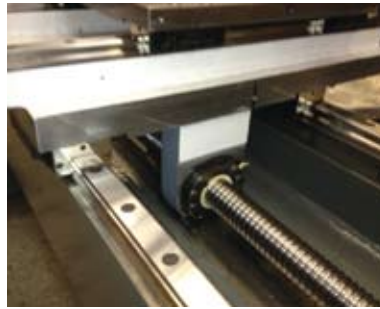


RG300 x 2000 Maximum Diameter 300mm, Maximum Length 2000mm

RG300 x 3000 Maximum Diameter 300mm, Maximum Length 3000mm

Roller Profiles  Parallel  Camber  Taper  Step Taper  Multi Camber  Chamfer (end of roll facing)  Radial Grooving

## Features, Advantages & Benefits



### Features

Cast Bed/  
Linear  
guideway.

### Advantages

Robust low  
friction stable  
grinding  
platform.

### Benefits

Long lasting  
stable platform  
giving  
consistent  
accurate  
results.



### Features

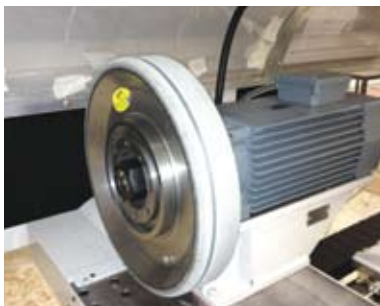
Fully enclosed/  
interlocked  
guard with  
dust extraction.

### Advantages

Meets H&S  
requirements.  
Protects the  
operator  
and working  
environment.  
Keeps the area  
dust free.

### Benefits

Clean safe  
working area.  
Compliant  
with H&S  
legislation.



### Features

High speed  
grinding  
spindle.

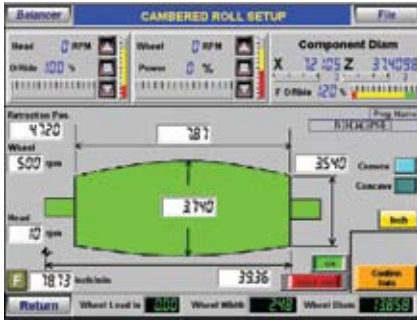
### Advantages

Enables the  
use of the  
latest tungsten  
carbide wheels,  
allowing for  
faster federates.

### Benefits

Increased  
production  
rates.

# Features, Advantages & Benefits



## Features

Graphical User Interface.

## Advantages

Instant recognition of the roll profile.  
Easy to understand.

## Benefits

Simple visual display that's easy to understand and enter roll data.



## Features

Emergency retract button.

Manual controls.

Handwheel.

## Advantages

Allows the operator to instantly safely retract the grinding wheel from the component at the touch of a button.

Allows the operator to easily move the machine around for test cuts etc.

## Benefits

Reduce wastage and wheel damage.  
Protect the operator.

Saves time.

Easier manual operation.



## Features

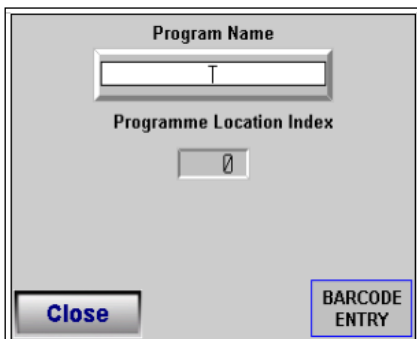
Automatic wheel balancer.

## Advantages

Balance wheels to sub-micron level at the touch of a button in seconds rather than hours.

## Benefits

Save time and money and improve quality.



## Features

Barcode Reader.

## Advantages

Instant programming.  
Offline programming.  
Offsite programming.  
Component tracking / traceability.

## Benefits

Program 1 or 10 machines in a matter of seconds. Programmer can be located anywhere.  
Low operator skill requirement.  
Sock/production control.  
Increased production and lower cost leading to increased profit margins.

