

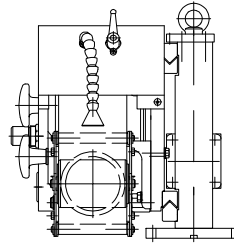
Superfinisher Type SF 102

For finest finishing of cylindrical products

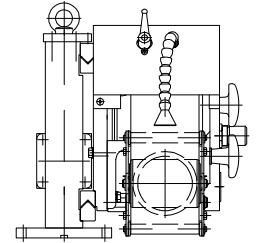
- Device designed to use micro-finishing- and lapping film rolls
- Max. film roll width: 100 mm
- Extremely compact
- Contact roll pressure precisely operated by pneumatic control
- Infinitely adjustable oscillation variable from 0 - 2,000 strokes per minute
- Oscilating stroke length 5 mm standard
- Automatic centering of film on contact roll
- Film feed infinitely adjustable from 1 - 26 cm/min
- Mains voltage 230 Volt / 10 A, 50 Hz +E
- Cooling fluid: emulsion, ca. 5 % fine filtered
- Air pressure: constantly 6 bar
- contact pressure up to 160 kp with 6 bar

Distance between centre and film contact roll to bed mounting plate approx. 80 mm

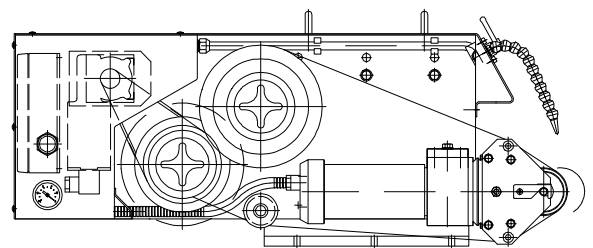
version left



version right



side view

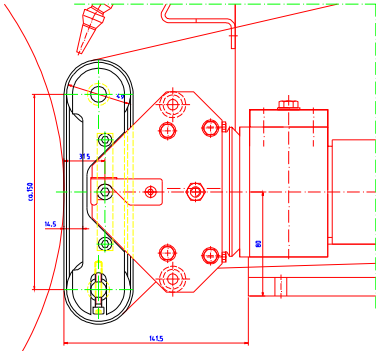


Machine complete, ready for use, incl. all electrical switch gear, without coolant system

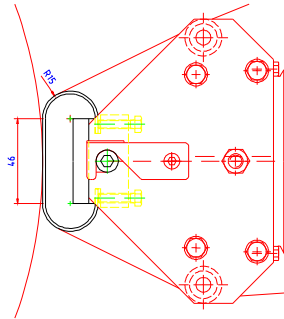
Can be extended to a double station superfinisher!

Approx. dimensions: Length 800 mm, width 300 mm, height 330 mm, weight 50 kg

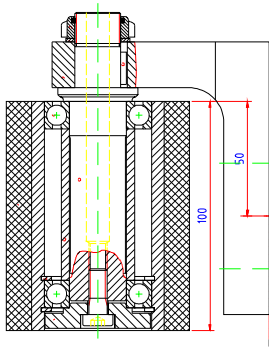
Finishing Heads for Superfinisher Type SF 102



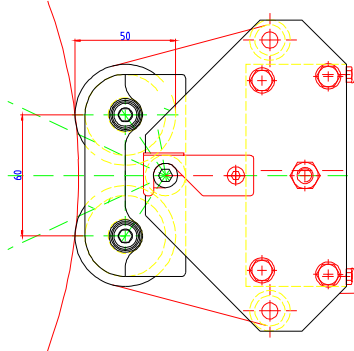
Contact belt



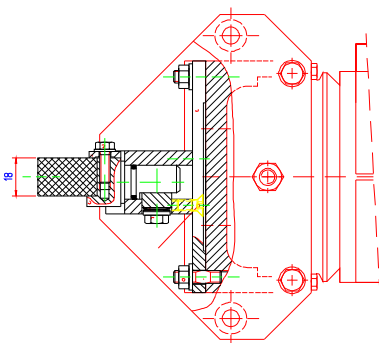
Contact platen



Contact roll with single bearing



Double contact roll



Honing stone fixture